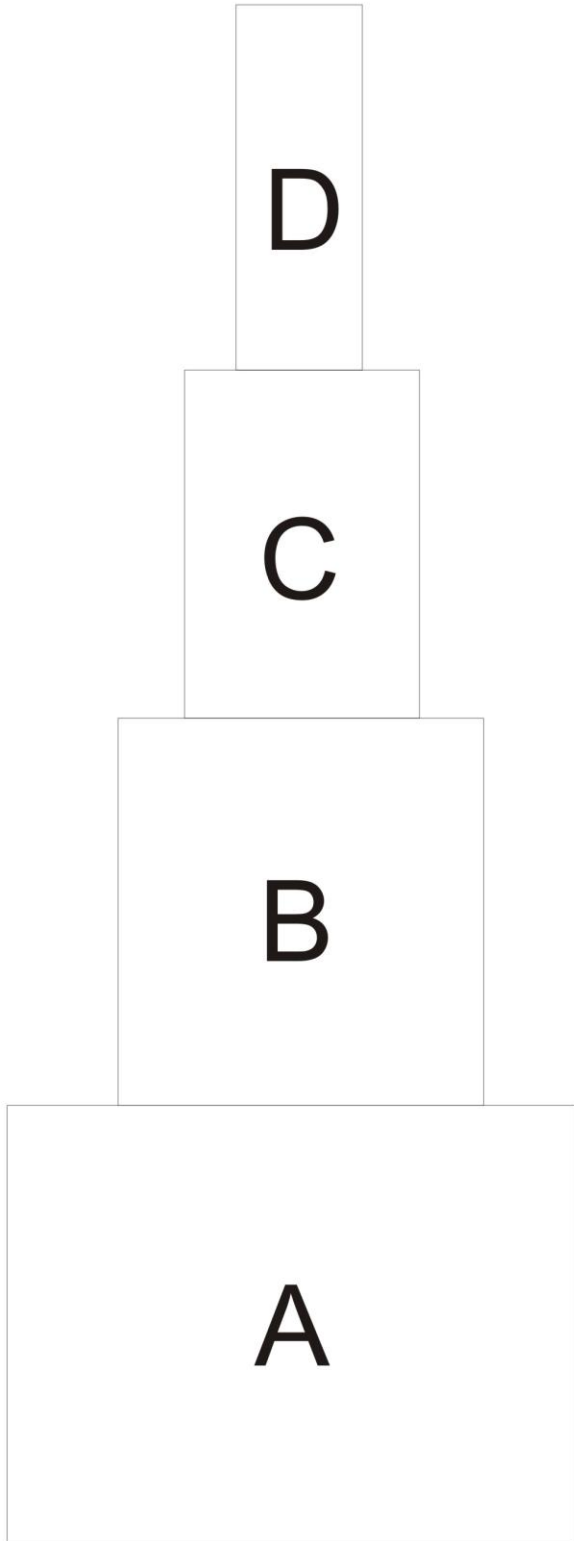


Worksheet n. 1.

Create an alimentary chain, match letters to numbers.



Natrix natrix



Cerura vinula

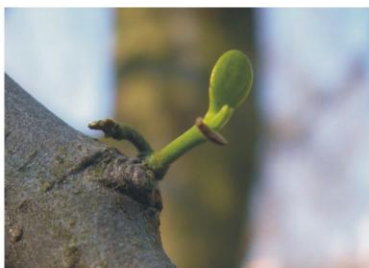


Hyla arborea



Circus aeruginosus

Worksheet n. 2.



A



B



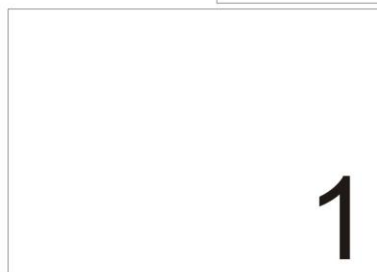
C



D

Viscum album

Order the pictures according to the time sequence. Match pictures (A, B, C, D) to numbers (1, 2, 3, 4).



Turdus philomelos

Turdiform birds (Turdidae) feed on mistletoe berries (*Viscum album*), that's how mistletoe expands.

Worksheet n. 3.

Match footprints to the appropriate animal marked by a letter.



1



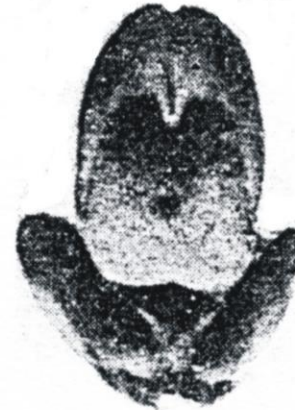
2



3



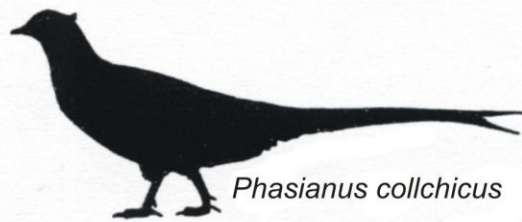
4



5



6



Phasianus colchicus

B



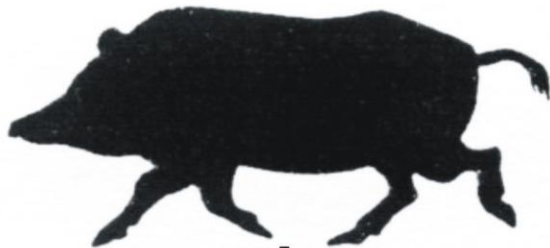
Vulpes vulpes

D



Canis lupus f. familiaris

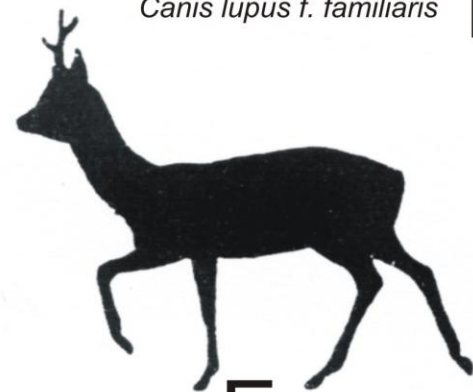
F



A *Sus scrofa*



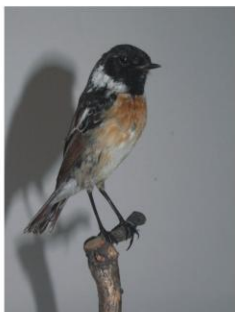
C *Anas platyrhynchos*



E *Capreolus capreolus*



Galerida cristata, Chocholouš obecný, Pipiška chochlatá, Dzierlatka, Κατσουλιέρης, Cochevis huppé



Saxicola torquata, Bramborníček černohlavý, Přhřaviar černohlavý, Kłaskawka zwyczajna, (Ευρωπαϊκός)



Merops apiaster, Vlha pestrá, Včelářík zlatý, Žolna zwyczajna, (Ευρωπαϊκός) Μελισσοφάγος, Guépier d'Europe



Worksheet n. 4.



Program celoživotního učení

Which of these birds fly to the warm areas in Africa for winter?



Anthus campestris, Linduška úhorní, Laptuška polná, Świergotek polny, Ωχροκελάδα, Pipit rousseline



Streptopelia turtur, Hrdlička divoká, hrdlička divá, Turkawka zwyczajna, Ευρωπαϊκό Τρυγόνι, Tourterelle des bois



Lanius collurio, Ťuhýk obecný, Strakoš červenochrtý, Dzierzba gasiorek, Αετομάχος, Pie-grièche écorcheur



Alauda arvensis, Skřivan polní, Škovránok polný, Skowronek polny, (Κοινή) Σιπαρήθρα, Alouette des champs



Riparia riparia, Břehule říční, Brehuľa knedá, Jaskółka brzegówka, Οχθοχελίδονο, L'Hirondelle de rivage



Sylvia nisoria, Pěnice vlašská, Penica jarabá, Pokrzewka jarzębata, Γερακοσιροβάκος, Fauvette épervière